

pixl.16™ REAL-TIME PCR PLATFORM

Compact & Portable with a touchscreen interface— runs up to 16 samples at a time in under one hour

Fast, reliable, and accurate - no calibration required

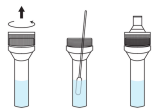
The BioGX pixl.16 is a high-performance open system real-time PCR platform, equipped with 4-optical channel direct imaging fluorescence, ultra-low-light CMOS bio-imager sensor and fast Peltier-powered thermal cycler to enable reliable and accurate molecular diagnostic testing. This compact device runs up to 16 samples at a time and is the ultimate solution for applications where portability, minimal space and fast turnaround times are required.



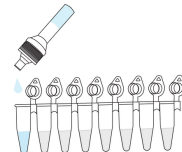
- Built-in 10" Android based touchpad
- Web-based Result Analyzer tool for easy result interpretation and analysis
- Sample to Result Solution - Just Add Sample

Sample-to-Result in 3 easy steps

pixl One-Drop Workflow



- 1** Remove screw cap, resuspend swab sample in BioGX pixl Buffer A, affix dropper cap



- 2** Squeeze one drop of sample to rehydrate lyophilized mastermix

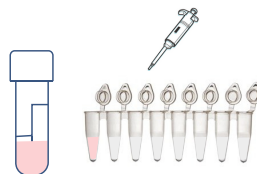


- 3** Run Protocol

Direct Sample Workflow



- 1** Rehydrate Mastermix



- 2** Add Direct Sample or Extracted Nucleic Acid



- 3** Run Protocol

Available Assays

Antimicrobial Resistance (Extracted)

- KPC, NDM, OXA-48 (REF: 450-018-LMP)
- vanA, vanB (REF: 450-017-LMP)
- vanA, vanB, mecA (REF: 450-081-LMP)
- VIM, GES, mcr-1 (REF: 450-019-LMP)

Bloodborne (Extracted)

- Plasmodium spp., P. falciparum, P. vivax (REF: 450-032-LMP)

Gastrointestinal (Extracted)

- Microsporidia (Encephalitozoon cuniculi, Encephalitozoon hellem, Encephalitozoon intestinalis, Enterocytozoon bienersi) (REF: 450-063-LMP)

Immunocompromised, Meningitis & Encephalitis (Extracted)

- Enterovirus (450-006-LMP)
- Escherichia coli, Listeria spp., Streptococcus agalactiae (REF: 450 025-LMP)
- HSV-1, HSV-2, VZV (REF: 450-030-LMP)
- Neisseria meningitidis, Streptococcus pneumoniae, Haemophilus influenzae (REF: 450-024-LMP)

Respiratory (Extracted)

- Streptococcus pyogenes (REF: 450-013-LMP)
- Mycobacterium tuberculosis complex, Mycobacterium avium complex, Mycobacterium spp. (REF: 450-054-LMP)
- Mycobacterium chelonae, Mycobacterium abscessus group, Mycobacterium fortuitum complex (REF: 450-055-LMP)
- Flu A, Flu B, RSV A/B (Ref: 450-070-HMP)
- Legionella pneumophila, Legionella spp. (REF: 450-094-LMP)

Respiratory (Direct)

- Xfree COVID-19 Direct RT-PCR (REF: 500-003-XMP)
- Xfree COVID-19, Flu A, Flu B (REF: 450-090-H-PXL)
- Xfree Group A Streptococcus (REF: 450-092-PXL)
- Xfree Mycoplasma pneumoniae (REF: 450-093-E-PXL)

Sexual Health (Extracted)

- Chlamydia trachomatis, Neisseria gonorrhoeae, Enterococcus faecalis (REF: 450-080-LMP)
- Chlamydia trachomatis, Neisseria gonorrhoeae, Trichomonas vaginalis (REF: 450-088-LMP)
- Gardnerella vaginalis, Trichomonas vaginalis, Candida spp. (REF: 450-078-LMP)
- HSV-1, HSV-2 (REF: 450-079-LMP)
- Mycoplasma genitalium, Mycoplasma hominis, Ureaplasma spp. (REF: 450-087-LMP)
- Treponema pallidum (REF: 450-040-LMP)

Sexual Health (Direct)

- Xfree hMPXV (REF: 450-086-E-PXL)
- Xfree HSV-1, HSV-2, VZV (REF: 450-030-E-PXL)
- Xfree Treponema pallidum (REF: 450-040-E-PXL)

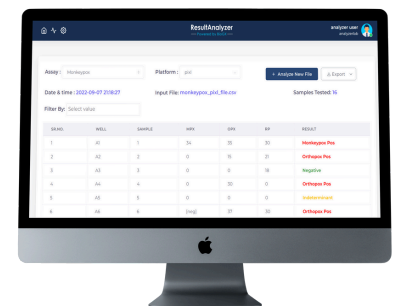
Urinary Tract/Wound (Extracted)

- Acinetobacter baumannii, Morganella morganii, Escherichia coli (REF: 450-071-LMP)
- Candida auris (REF: 450-043-LMP)
- Citrobacter freundii, Citrobacter koseri, Salmonella spp. (REF: 450-073-LMP)
- Klebsiella aerogenes, Enterobacter cloacae complex, Proteus vulgaris (REF: 450-072-LMP)
- Klebsiella oxytoca, Klebsiella pneumoniae, Pseudomonas aeruginosa (REF: 450-074-LMP)
- Proteus mirabilis, Providencia stuartii, Serratia marcescens (REF: 450-075-LMP)
- Staphylococcus aureus, Staphylococcus lugdunensis, Staphylococcus saprophyticus (REF: 450-076-LMP)
- Staphylococcus epidermidis, Staphylococcus haemolyticus, Streptococcus agalactiae (REF: 450-077-LMP)

Result Analyzer

BioGX Result Analyzer offers a robust, easy-to-use, flexible web-based for analysis of data exported from pixl.16 and many other open system platforms.

- **CLOUD-BASED PLATFORM** - No installation needed. Browser based solution accessible from anywhere.
- **SIMPLE INTERFACE** - Easy-to-use user interface. Just upload the raw data file from the instrument and see results instantly.
- **FLEXIBLE ASSAY CONFIGURATION & INTEGRATION** - Configure assay definition and customize layout of output file to seamlessly integrate with existing Laboratory Information System.



Research Use Only Products (450-series part numbers). Not for Use in Diagnostic Procedures. 500-003-XMP is registered by the FDA as an emergency use authorized real-time PCR test. BioGX Result Analyzer is a software solution for analysis of data exported from pixl.16 and many other open system platforms. Controls and other info available at <https://www.biogx.com/syndromic-multiplexes/>

